

# Megatalk Pro



# Java Programming

Stefano Sanna  
gerdavax AT tiscali.it

GULCh - Gruppo Utenti Linux Cagliariari

# Java Programming



- Le basi: JRE, JDK e documentazione
- Java2 MicroEdition... solo su Linux! :-)
- Ambienti di sviluppo
  - Eclipse
  - Netbeans
  - JDeveloper
  - IDEA
- Estensioni

# JRE e JDK ufficiali



- Sono disponibili il Java Runtime Environment e il Java Development Kit ufficiali rilasciati da Sun Microsystems e allineati all'ultima versione
- JDK, JRE e documentazione:  
<http://java.sun.com>

# Ambienti open source



- Virtual machine e standard class library:
  - Kaffe  
<http://www.kaffe.org>
  - Janos Virtual Machine (JanosVM)  
<http://www.cs.utah.edu/flux/janos/janosvm.html>
  - GNU Classpath  
<http://www.gnu.org/software/classpath/classpath.html>
  - Ewe  
<http://www.ewesoft.com>

# Java2 MicroEdition



- Per lo sviluppo su J2ME sono disponibili alcuni importanti strumenti di sviluppo, quali il Wireless Toolkit di Sun Microsystems e la J2ME Developer Suite di Nokia
- Pur non trattandosi di strumenti open source, sono utilissimi per lo sviluppo di applicazioni per cellulari e palmari compatibili per la piattaforma J2ME

# ... solo su Linux! :-)



- Java per PDA/Set-top box ha migrato da PersonalJava a J2ME CDC/FP/PBP/PP...

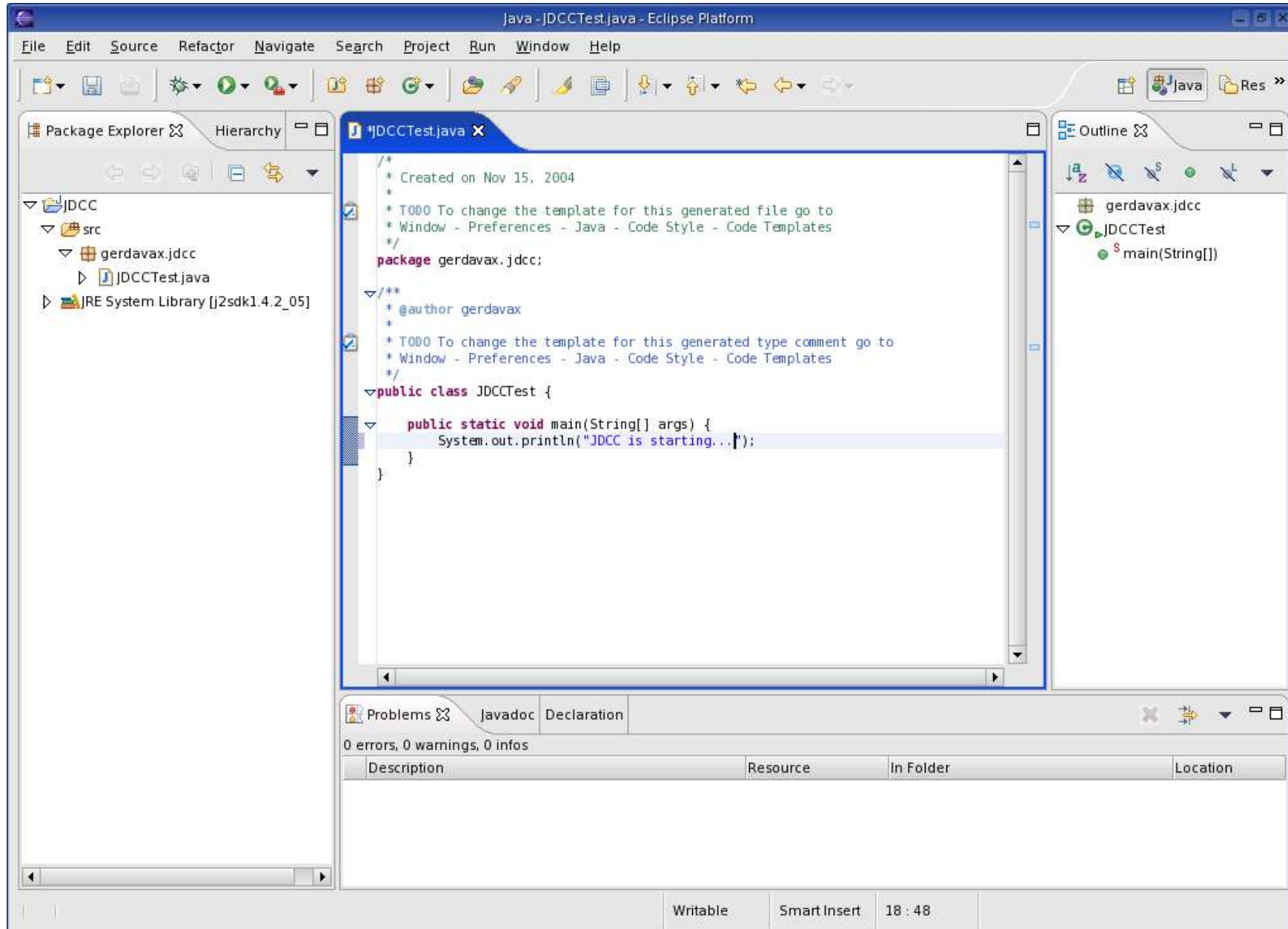
... e...

l'implementazione di riferimento di J2ME PersonalProfile è disponibile solo per Linux!

<http://java.sun.com/j2me>

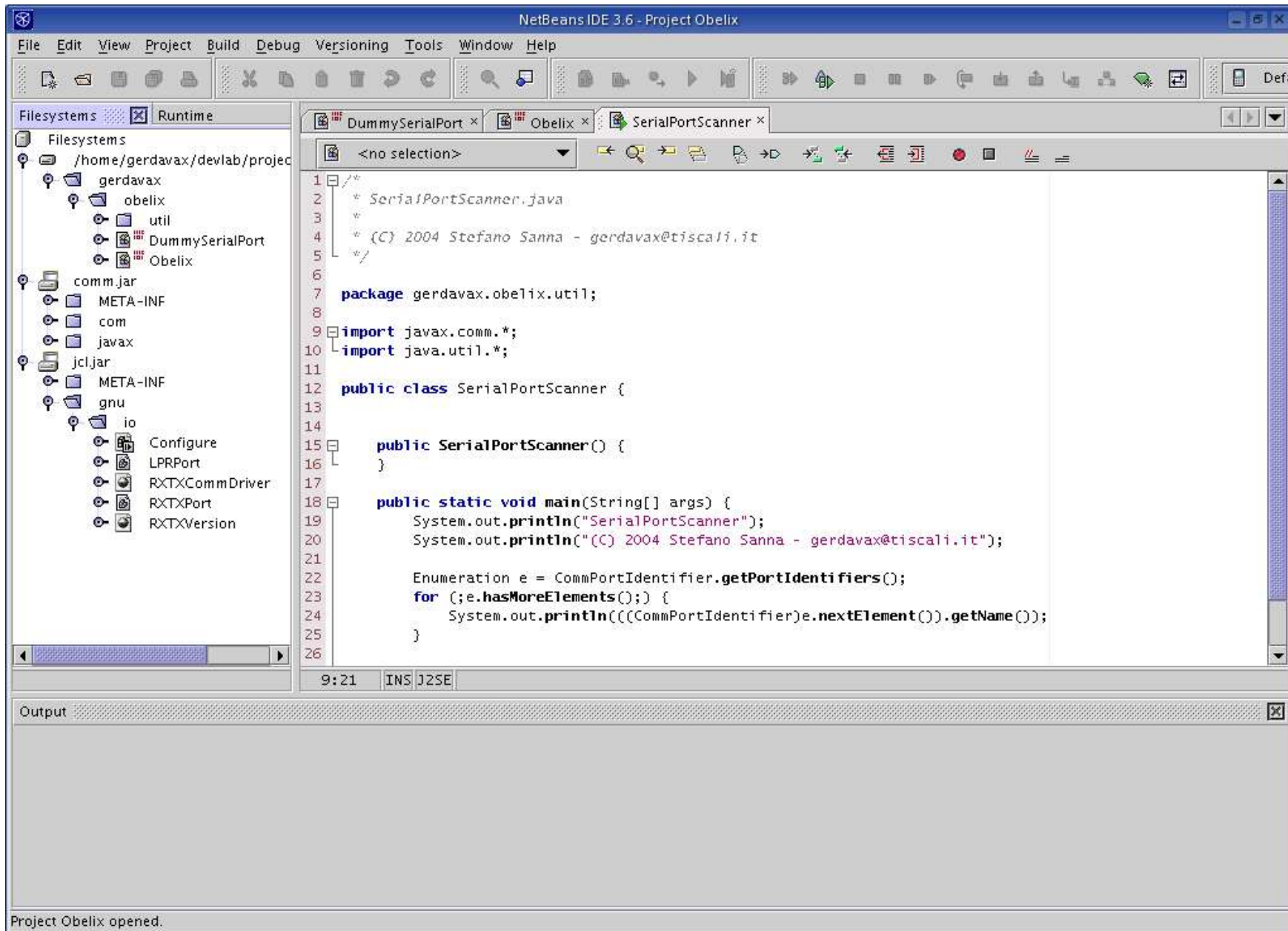
GULCh - Gruppo Utenti Linux Cagliariari

# Eclipse 3.0.1



GULCh - Gruppo Utenti Linux Cagliari

# Netbeans 3.6



GULCh - Gruppo Utenti Linux Cagliari



# Netbeans 4.0 con wireless



NetBeans IDE 4.0 Beta 1 - Solitario

File Edit View Build Run Refactor Versioning Tools Window Help

Pro... Files Runtime

mp3jones

- Source Packages
  - mp3jones
    - MP3Jones.java
    - mp3jones.core
    - MP3File.java
    - mp3jones.gui
  - Test Packages
    - <default package>
- Solitario
  - hello
    - HelloMIDlet.java

```
1 /*  
2  * HelloMIDlet.java  
3  *  
4  * Created on August 22, 2004, 5:49 PM  
5  */  
6  
7  package hello;  
8  
9  import javax.microedition.midlet.*;  
10 import javax.microedition.lcdui.*;  
11  
12 /**  
13  * An example MIDlet with simple "Hello" text and  
14  * Refer to the startApp, pauseApp, and destroyApp  
15  * methods so see how each handles the requested
```

Output - build.xml

```
Copying 1 file to  
Copying 1 file to  
Deleting: /tmp/  
exists.platform.  
exists.platform.  
init:  
post-init:  
run:  
Starting emulator  
Running with storage root DefaultColorPhone
```

Building build.xml (jar, run)...

DefaultColorPhone

MIDlet Help

Test string

Exit

SELECT

CLEAR

1 2 3  
4 5 6  
7 8 9  
\* 0 #

SHIFT SPACE

OK More Information

Version 2.1 (Dec 11, 2003 2:09 PM)  
Copyright 2003 Sun Microsystems, Inc. All rights reserved.  
SUN PROPRIETARY/CONFIDENTIAL.  
Use is subject to license terms.

For more information on Java 2 Platform, Micro Edition (J2ME), visit <http://java.sun.com/j2me>.

GULCh - Gruppo Utenti Linux Cagliari

# JDeveloper 10g 9.0.5.2



GULCh - Gruppo Utenti Linux Cagliariari

Oracle JDeveloper 10g - Application1.jws : Client.jpr : file:/home/gerdavax/jdevhome/mywork/Application1/Client/model/client/Java Class Diagram1.oxd\_java

File Edit View Search Navigate Run Debug Model Versioning Tools Window Help

Applications - Navigator

- Application1
  - Client
    - Application Sources
      - client
        - Class1.java
        - JavaClass1.java
        - JavaClass2.java
        - JavaClass3.java
        - Java Class Diagram1**
        - JavaInterface1.java

Component Palette

Java

- Pointer
- Java Class
- Java Interface
- Directed 1 to 1 Association
- Directed 1 to \* Association
- Directed Strong Aggregation
- Extends
- Implements
- Dependency
- Note
- Link
- Attachment

Java Class Diagram

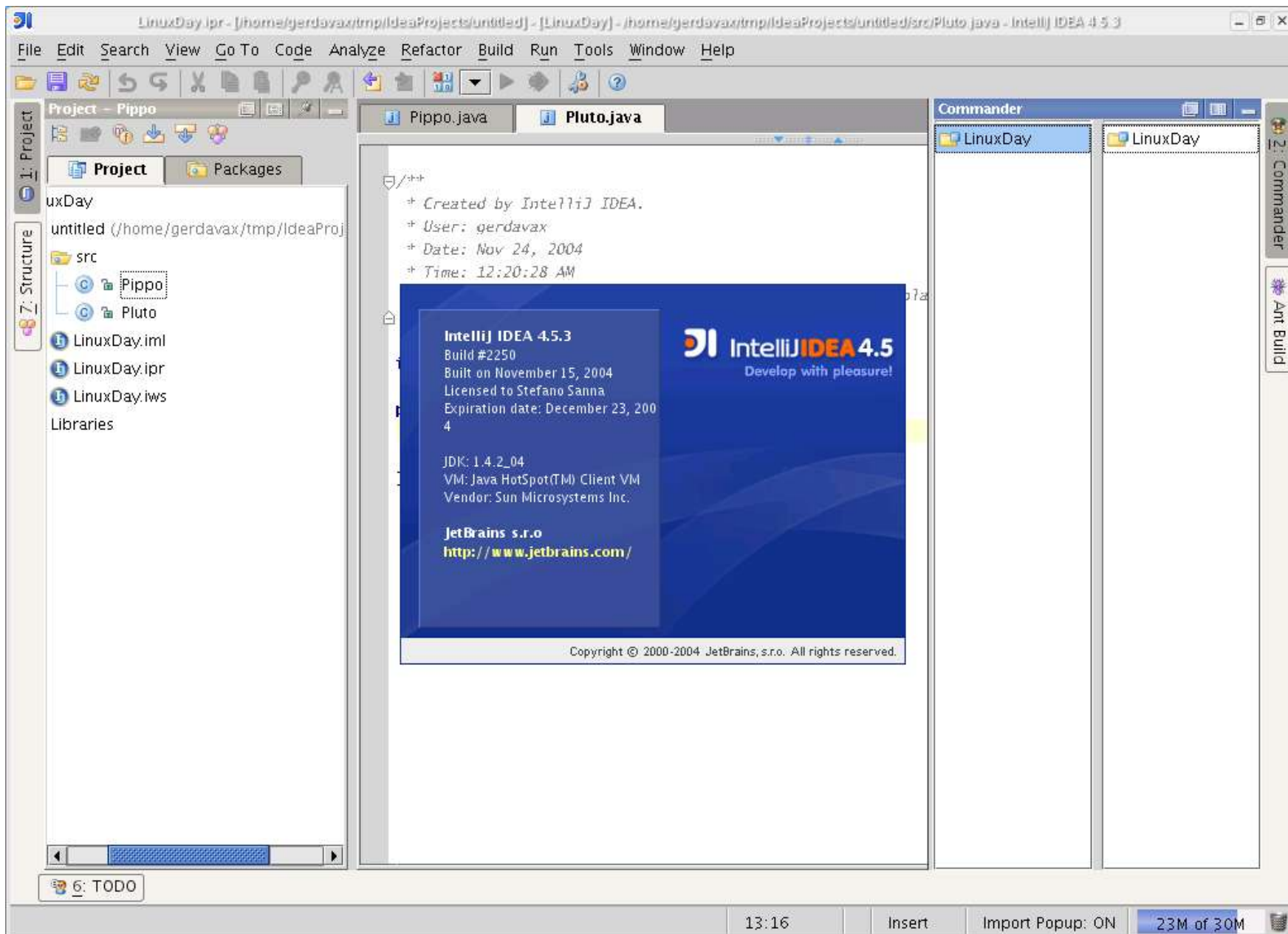
Messages Dependencies

Dependencies for "client.Class1"

- Uses
  - java.lang
- Used By

file:/home/gerdavax/jdevhome/mywork/Application1/Client/model/client/Java Class Diagram1.oxd\_java UML Modeling

# IDEA



GULCh - Gruppo Utenti Linux Cagliari

# Estensioni



- In ambiente Linux esistono numerose estensioni native, quali:
  - JavaComm, per l'accesso alle porte seriali
  - jUSB, per l'accesso alle porte USB